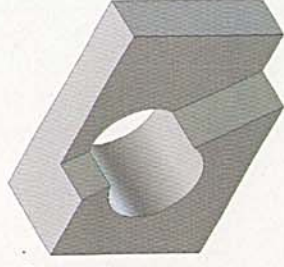


Good 100/100



Steps for 3D Model Creation

By: Rick Castleton

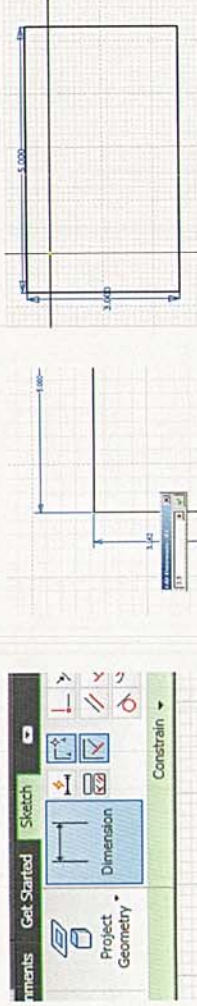


Step 1: Click on the "I" icon in the top left corner of the screen. Click on NEW and scroll down the file standard.ipt. Open it. Now, create a 2D sketch by clicking on the 2D sketch icon in the top left of the screen.



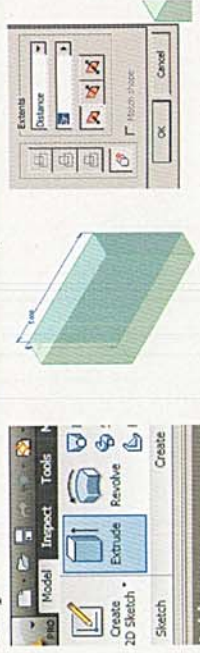
Step 2: Use the rectangle drawing tool (located in the top left portion of the screen) and create a rectangle in the 2D sketch.

Step 3: Use the dimensioning tool (shortcut: d) and dimension the rectangle by clicking on a line and typing in the dimension wanted. Dimension it to be 5" by 3.5"



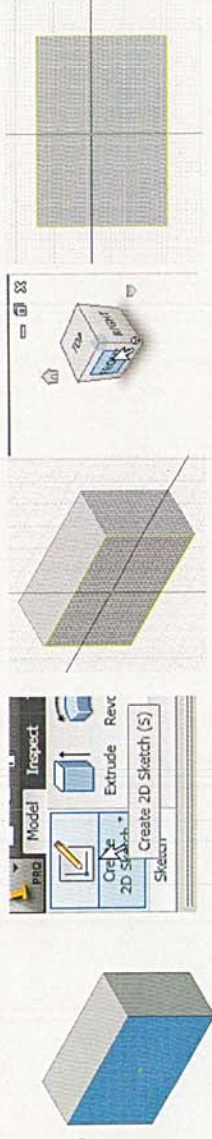
Step 4: Click the Finish Sketch check mark. (Top right part of the tool bar)

Step 5: Click the extrusion tool, and then select the rectangle to be extruded.

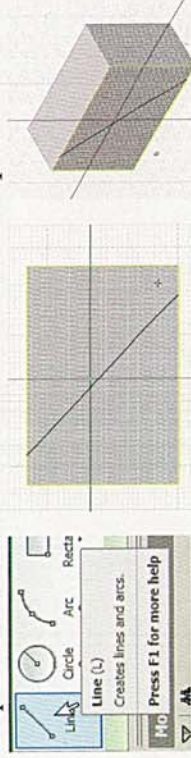


Step 6: Select to extrude the feature out 2" then press OK. (As shown above in 3rd picture)

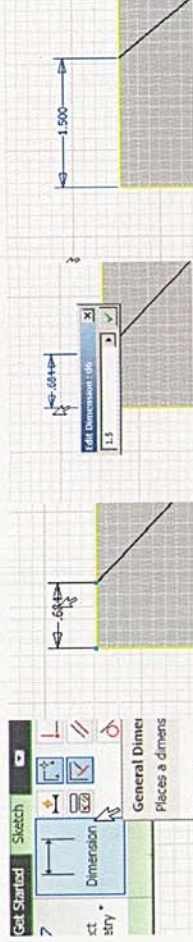
Step 7: Select the biggest face of the object, which is the same shape as created in Step 3. Now create a 2D sketch on that face, and center over the sketch by clicking the front face of the cube in the top right of the screen.



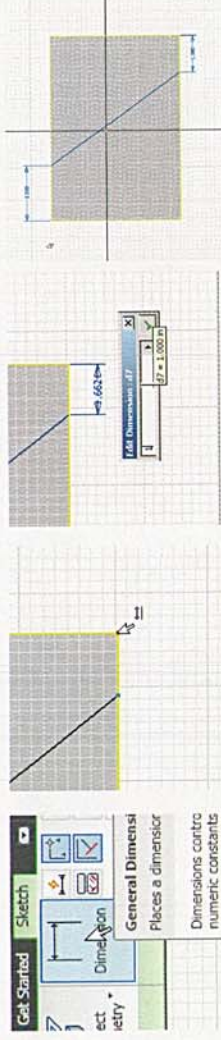
Step 8: Create a line that extends from the top left of the face to the bottom right.



Step 9: Using the dimension tool, create a space between the top of the line just drawn, and the top left corner of the face being drawn on. Space should be 1.5”.

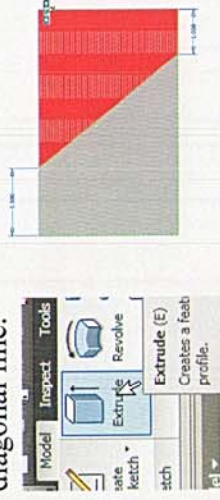


Step 10: Using the dimension tool again, create a similar space between the bottom of the diagonal line and the bottom right corner of the face being drawn on. Space should be 1”.

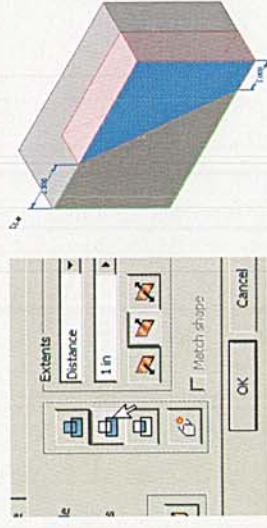


Step 11: Finish Sketch

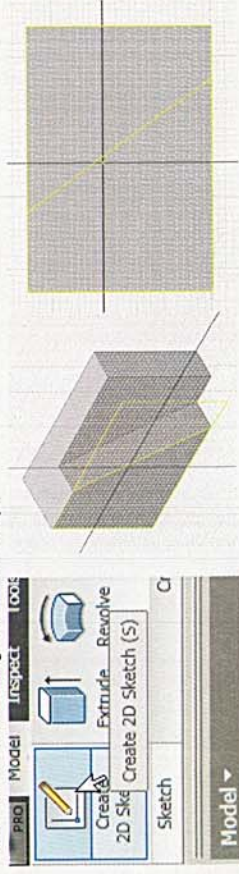
Step 12: Use the extrusion tool, and click on the right side of the new dimensioned diagonal line.



Step 13: Use the cut feature of the extrude tool, and cut into the shape 1”. Press OK.



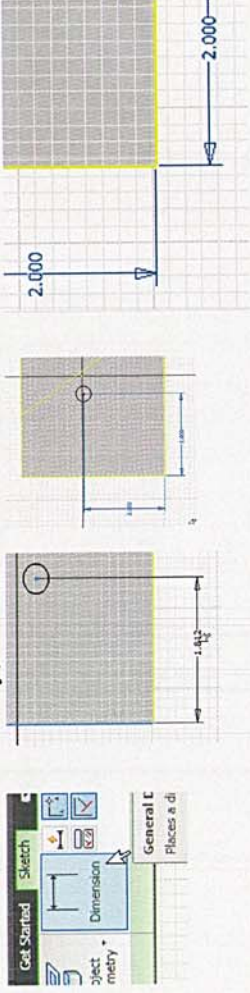
Step 14: Click and Create a 2D sketch on the portion to the left of the diagonal line (the side that wasn't just cut out).



Step 15: Use the circle drawing tool and create a small circle in the center of the face you made the sketch on.

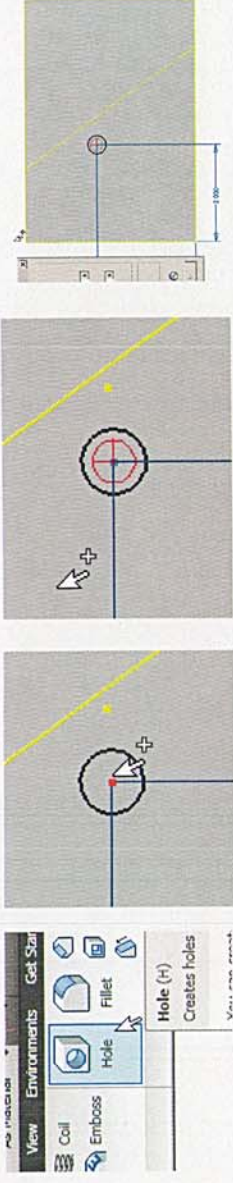


Step 15: Using the dimensioning tool, make the center of the circle 2" from the left side of the face by clicking on the center of the circle and then on the left line. Then, again make the center 2" away, but from the bottom of the face.

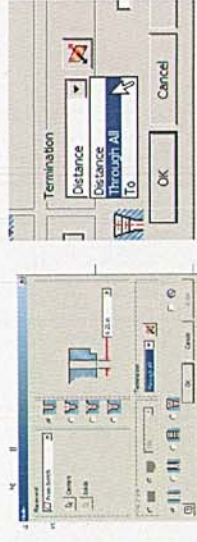


Step 16: 'Finish Sketch'

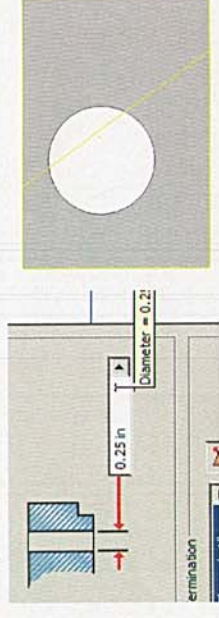
Step 17: Use the hole feature, and select the center point of the circle created in Step 14. This will be the center of the new hole.



Step 18: Select the hole's termination to be 'through all'.



Step 19: Now, set the hole's diameter to 2", and click OK.



Step 20: Finished Shape. Now, click on the picture of the house, or top right of the cube in the top right portion of the screen to view in the shape in isometric.

